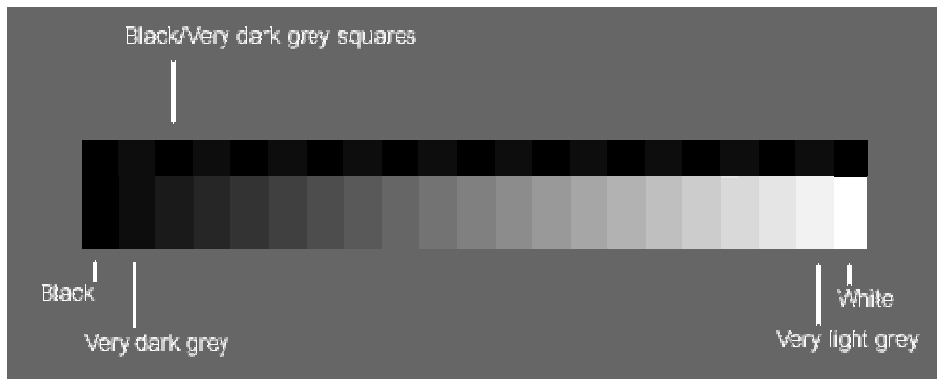


## How to make sure your digital images look good on the projector

In future the club's digital projector will be set up as closely as possible to the sRGB standard.

This is also used by most firms who print photos from digital files. Many of them supply advice and/or test-images on their websites to help you adjust your computer and its monitor so that if an image looks right on your screen at home you can expect it to make a satisfactory print. Now it should also look right on the club's projector.

You can check if your monitor needs adjustment by looking at the test image below:



You should **only just** be able to distinguish the dark squares along the top, and see all 21 different shades underneath. All the greys should look neutral in colour. (Let the monitor warm up first, and make sure the light in your room is not too bright, both when you do this test and when you are adjusting your images.) If your monitor has a brightness control it may be helpful here.

You could also go to <http://www.peak-imaging.com/htmls/download.htm> and download a colourful test image produced by Fuji. This will be displayed at the club as part of the projector set-up routine. Check that it looks reasonable similar on your own computer.

If you think your monitor needs further adjustment and you are feeling brave, have a look at <http://www.normankoren.com/makingfineprints1A.html> where there is a full technical explanation and some useful tools and test images, including a handy program called QuickGamma.