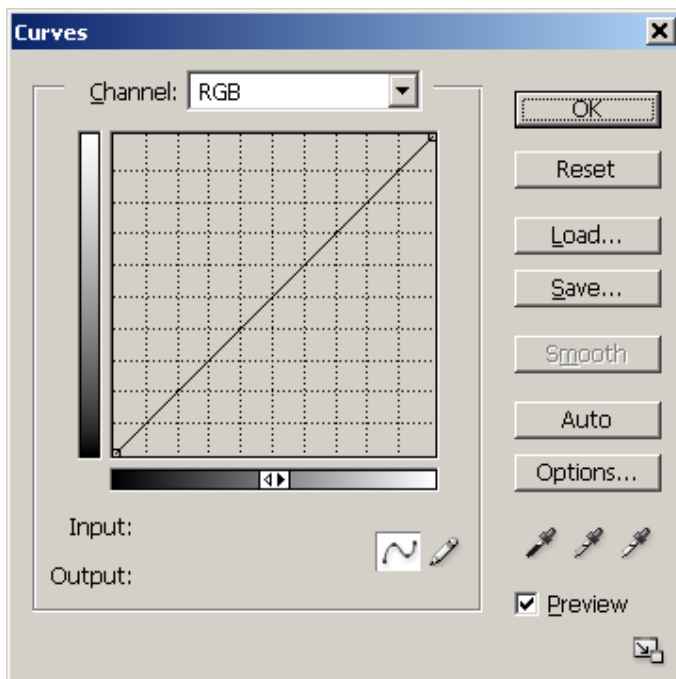
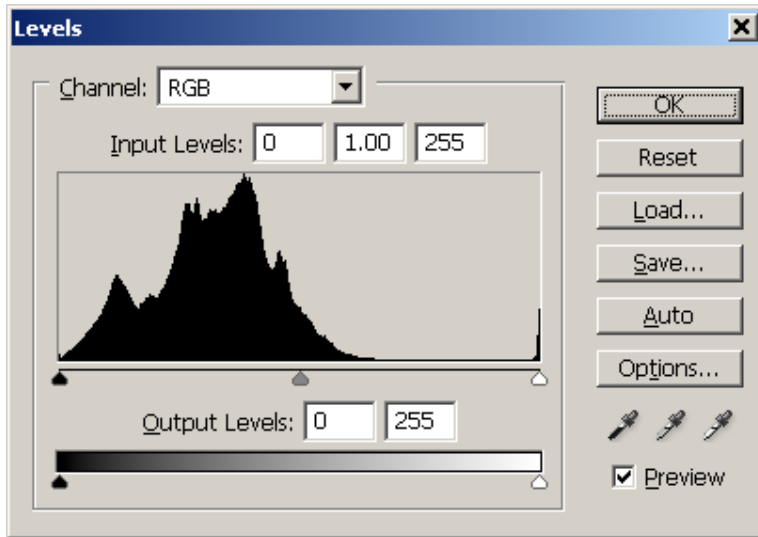
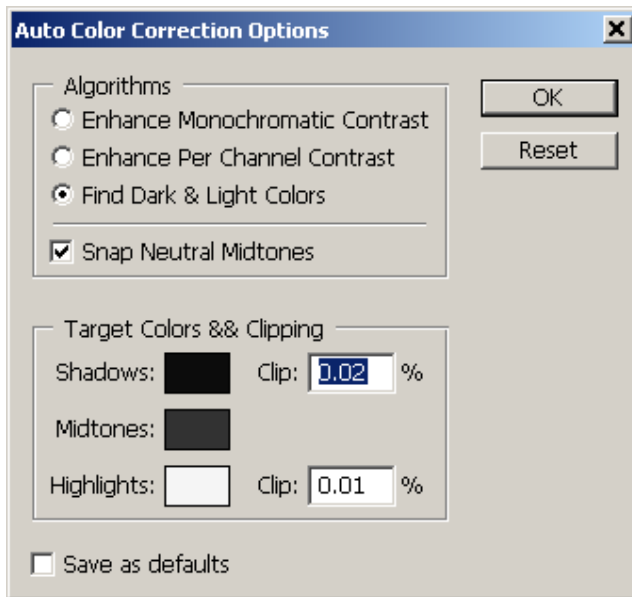


Open your image & choose LEVELS or CURVES
(the levels 'dialogue-box is smaller...)



Press the {Options} button & this shows how you can control how the {Auto} button works.



Note – You must have PREVIEW checked too see the effect of your selection.

- *Enhance Monochromatic Contrast is the same as Auto Contrast. This analyses each channel (RGB), it sets BLACK in the darkest channel & WHITE in the lightest channel = **NO COLOUR CHANGE***
- *Enhance Per Channel Contrast is the same as Auto Levels. This analyses each channel (RGB), but it sets BLACK & WHITE in each channel = **COLOUR CHANGE***
- *Find Dark and Light Colors is the same as Auto Color. Again analyses each channel & neutralises the DARKEST, the MIDTONE & the LIGHTEST values in each channel = **COLOUR CHANGE***

- Snap Neutral Midtones neutralises these....

- Target Colors & Clipping

You can change the target colours (but I have never found the need-to) & you can change the 'Clip' values (I have changed these – the default values I find are too high). *These values control how much data will be lost...*

S